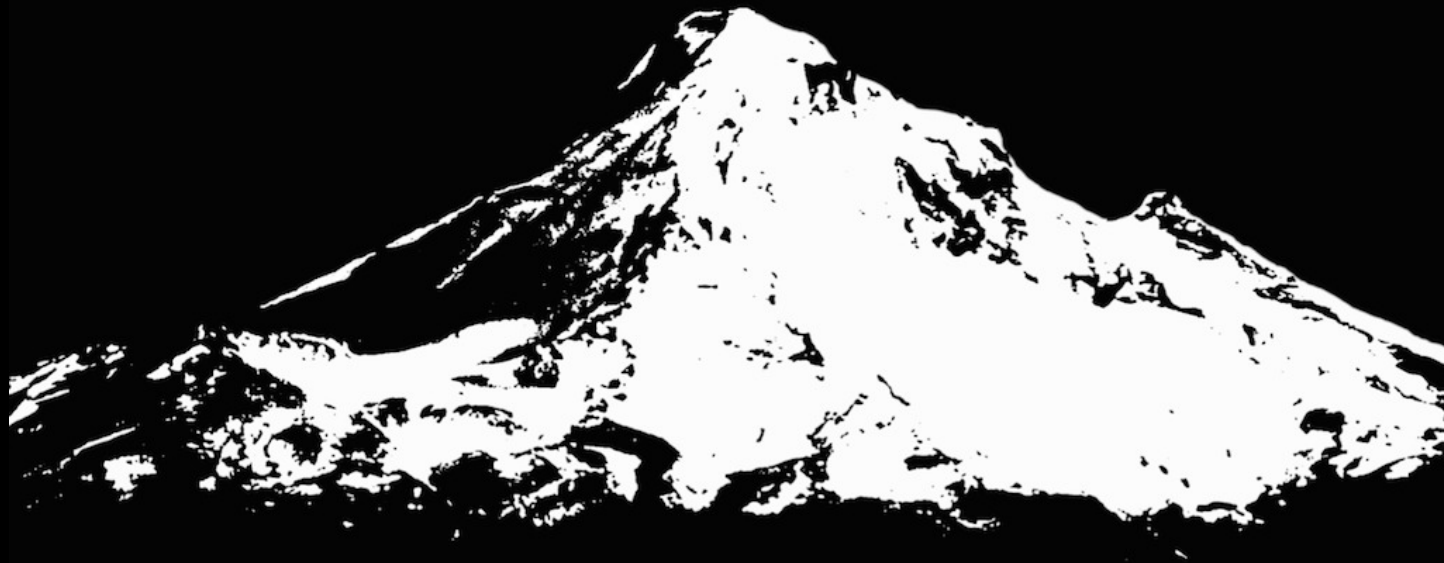


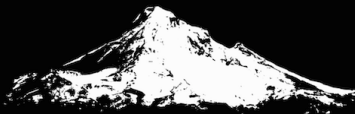
**Portland, OR, 13-17 June 2015**



**PLDI 2015**

# Program Chair's Report

Steve Blackburn

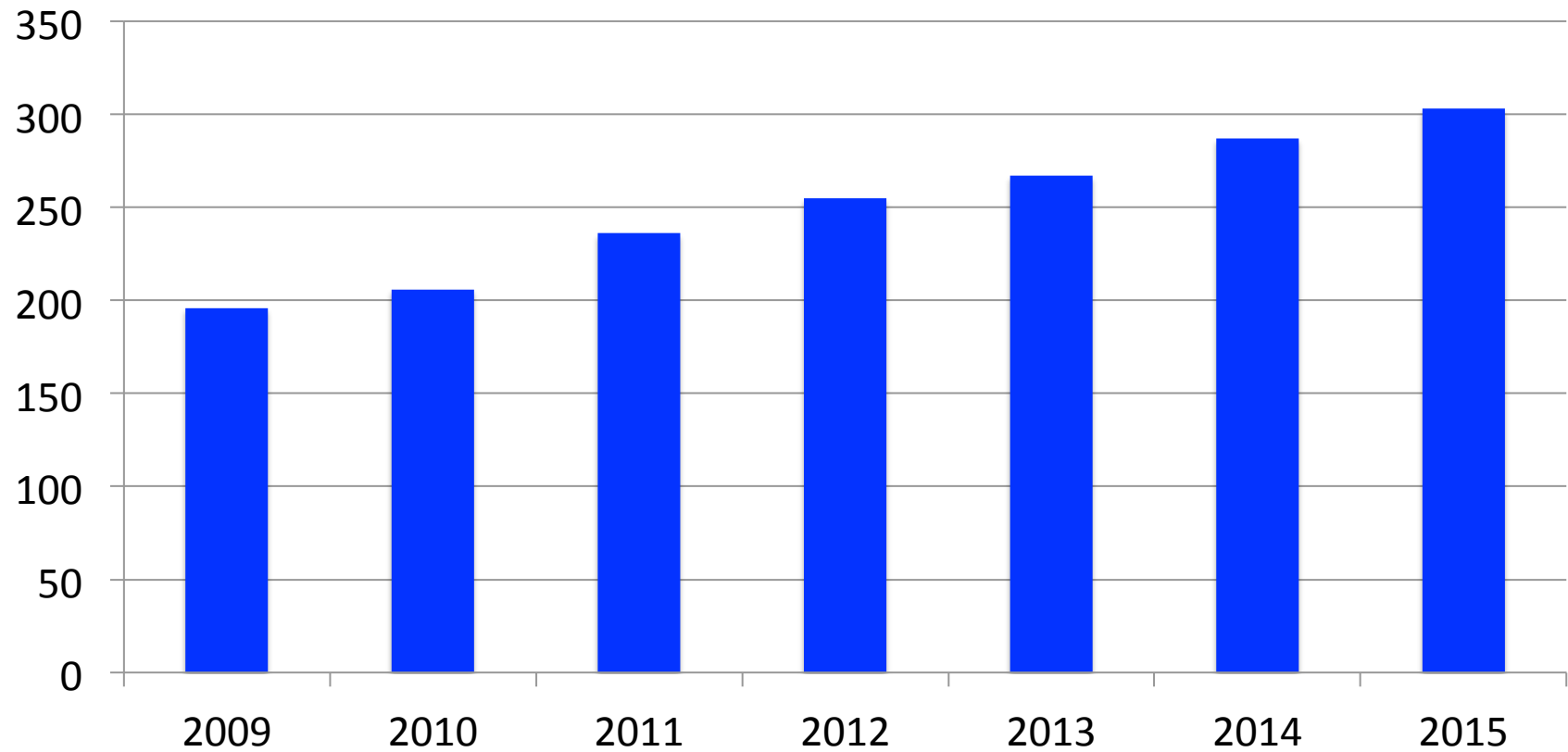


Portland, OR, 13-17 June 2015

**PLDI 2015**

# PLDI is Growing

Submissions



# 2015 Overall Process

- Two phase review
- Guardian assigned to each paper
- Double blind (until end of phase two online discussion)
- Extensive online discussion at the end of each phase, attempt to reach consensus
- Expert reviewers suggested during phase one
- In-person PC meeting in New York in late January

# Two Phase Review

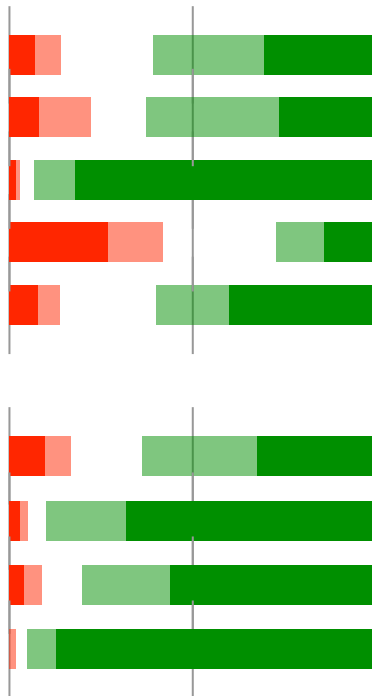
- Status quo would have lead to 27 reviews per PC member
- Constraints
  - Expect >300 submissions
  - Keep PC reviewer load < ~20
  - Keep PC size < ~35
  - 3 PC reviews per paper
  - Scale to larger submission numbers
- Principles
  - Transparency
  - Opportunity to re-publish
- 1 PC + 2 ERC reviews in phase one
  - (~9 per PC, ~5 per ERC)
- Phase one author response, notification

# 2015 The Numbers

- 303 complete submissions (record)
- 58 acceptances (record) (19%)
- 1261 reviews, sourced from
  - 31 program committee members (~19 pp)
  - 121 external review committee members (~6 pp)
  - 31 external experts (~1 pp)
- 150 (~50%) eliminated in phase one
  - Consensus that paper was not viable
  - Confidence that expertise was sufficient
- 108 (~35%) discussed at PC meeting

# Changes for 2015

*Authors N=99*



- No abstract deadline
- Format changes
  - 10pt
  - 11 pages
  - Bibliography exclusive
  - Author-year
- Double blind
- Guardians
- Two-phase reviewing
  - Author response
  - Early notification
- Extended right-of-reply
- Author and reviewer surveys

*Reviewers N=73*

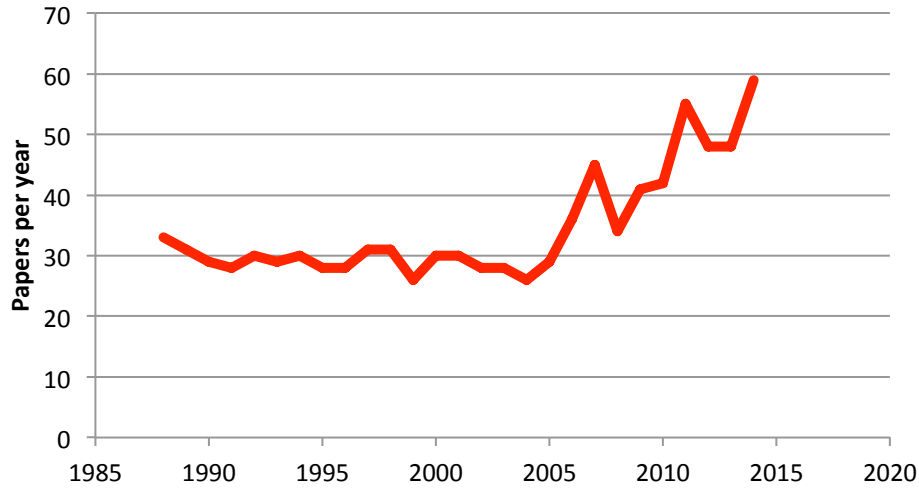


# Key Lessons

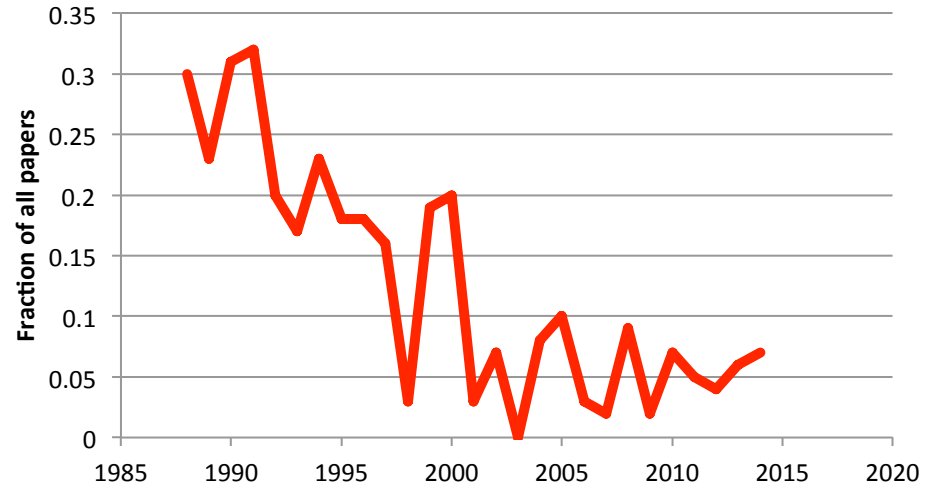
- Change is painful, even when necessary
- Diminishing returns with larger ERC
- First phase elimination *greatly* sharpens criticality of
  - Review assignments
  - Review quality
  - Reviewer – author communication



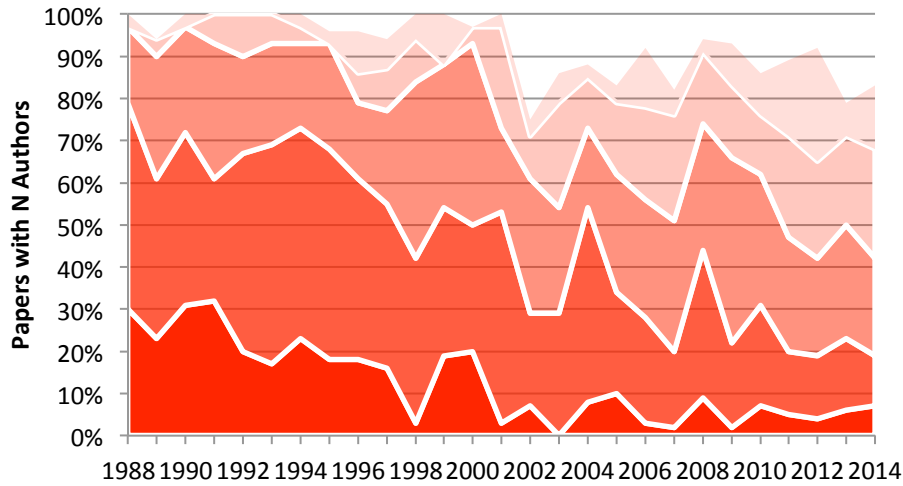
### Total Papers per Year



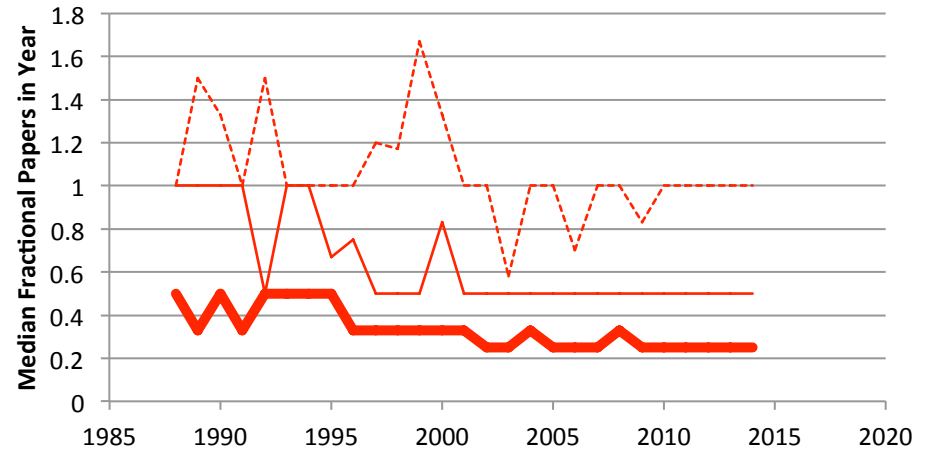
### Single Author Papers per Year



### Number of Authors



### Fraction of Paper Per Year Per Author (showing median, 90th and 99th percentiles)



# Special Thanks

- David Grove
- Program Committee
- ERC and experts
- PLDI SC
- Keshav Pingali, Kathryn McKinley, Emery Berger
- Student volunteers!

**Portland, OR, 13-17 June 2015**



**PLDI 2015**